

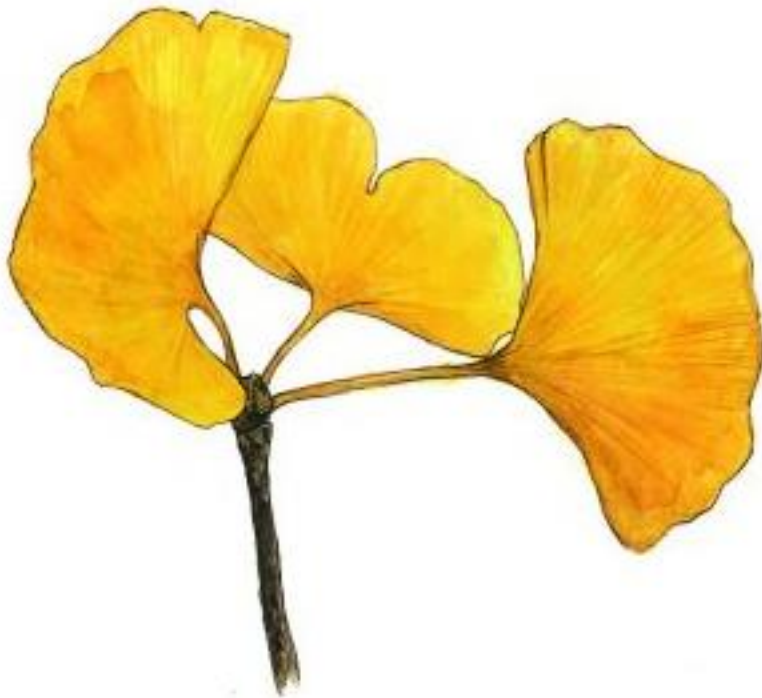
# Ginkjo

**Plant part:** Leaf

**Scientific name:** *Ginkgo biloba*

**INCI name:** Ginkgo Biloba Leaf Extract

**IECIC 2015 name:** GINKGO BILOBA LEAF EXTRACT



# Ginkjo

---

**Product Name:** Ginkjo

**Plant Name:** Ginkgo

---

*Ginkgo biloba*, also known as ginkgo, is sometimes called a living fossil. It is the oldest living tree species. With its long lifespan, ginkgo trees over 1,000 years old are found in many regions in Korea, China and Japan. One of the oldest ginkgo trees is found in Yongmunsa, an old temple in Korea.

In East Asia , ginkgo nuts and leaves have long been used in cookery and medicine. The leaf is edible as a dietary supplement and as an infusion. Green leaves are dried and made into a tea to assist in blood circulation, mental problems and respiratory disorders.

As a single extract of ginkgo leaves, it has been demonstrated as an anti-inflammatory agent due to an active compound, ginkgetin. It has been suggested that it can be photoprotective and effective to improve skin barrier function and elasticity.

[1] Kwak, W., Han, C., Son, K., Chang, H., Kang, S., Park, B. and Kim, H. (2002). Effects of Ginkgetin from Ginkgo biloba Leaves on Cyclooxygenases and In Vivo Skin Inflammation. *Planta Medica*, 68(4), pp.316-321.

[2] Belo, S., Gaspar, L. and Campos, P. (2011). Photoprotective Effects of Topical Formulations Containing a Combination of Ginkgo biloba and Green Tea Extracts. *Phytotherapy Research*, 25(12), pp.1854-1860.

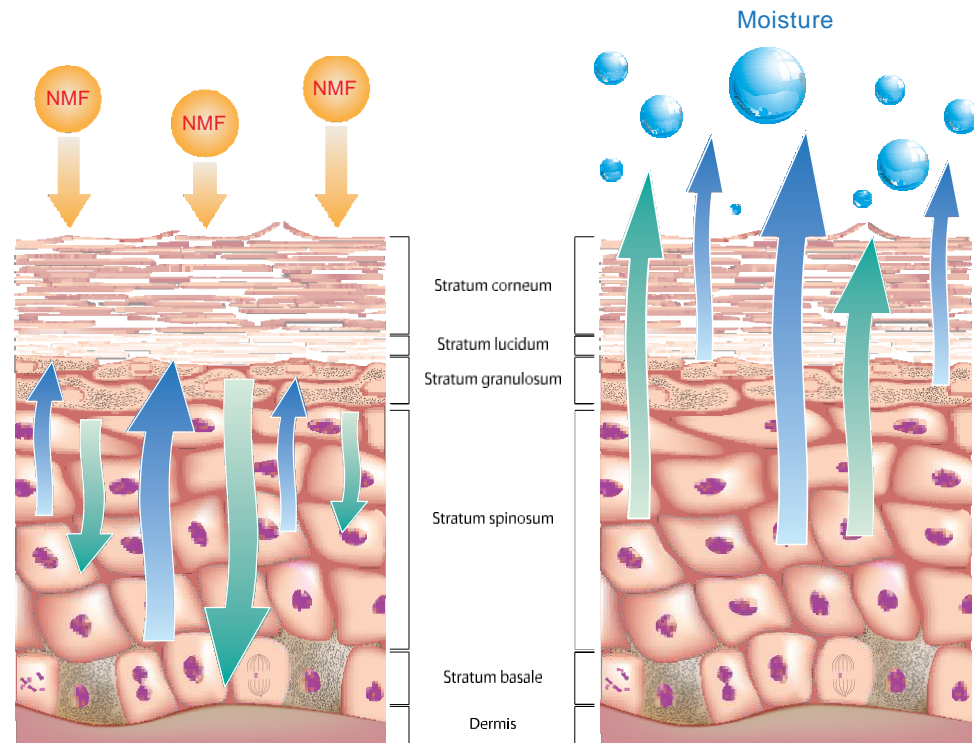
[3] Synergistic Effects of Green Tea and Ginkgo Biloba Extracts on the Improvement of Skin Barrier Function and Elasticity. (2014). *Journal of Drugs Dermatology*, 13(9), pp.1092-1097.

*Ginkgo biloba* is a unique species. There are no other plants living today with which it shares morphological characteristics, there are however fossils over 270 million years old with which it holds a similar resemblance. Native to China, *G. biloba* was once considered extinct in the wild, however there are two small areas in eastern China in which naturally occurring specimens still grow.

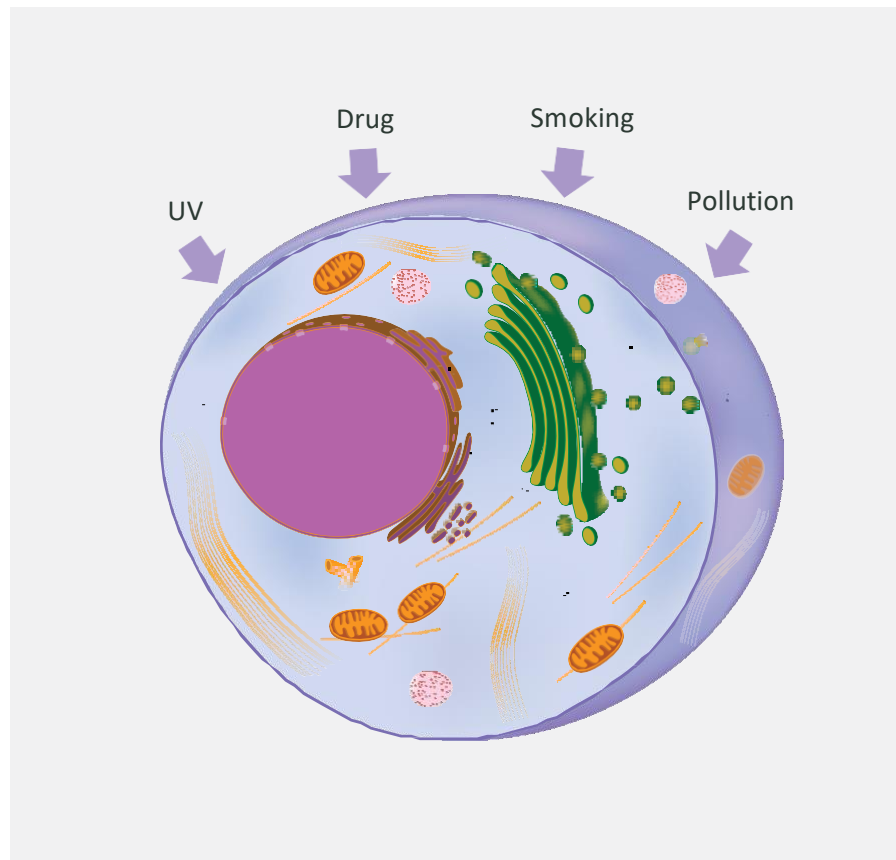
Extract of *G. biloba* has had lots of recent attention due to its significant beneficial effects on the nervous system. *G. biloba* is also considered a vasodilator and has actions to improve the efficiency of blood circulation. The bioactive constituents are composed of ginkgo flavone glycosides and terpenoids. The leaves have indicated very antioxidant levels due to the high concentration of vitamins C and E, as well as significant anti-inflammatory actions.

# Skin Structure

The retention of water in the Stratum corneum (SC) is dependent on two major components: (1) the presence of natural hygroscopic agents within the corneocytes (collectively referred to as natural moisturizing factor) and (2) the SC intercellular lipids orderly arranged to form a barrier to transepidermal water loss (TEWL). The water content of the SC is necessary for proper SC maturation and skin desquamation. Increased TEWL impairs enzymatic functions required for normal desquamation resulting in the visible appearance of dry, flaky skin.



# Antioxidants



## ***Why are they important?***

Our skin is under attack from many factors in daily life, such as UV, pollution and smoking. These factors increase the Reactive Oxygen Species (ROS).

Antioxidants from Ginkgo Biloba Leaf Extract can inhibit the generation of ROS and in turn inhibit cellular damage.

# Reported functions

---

INCI Name	GINKGO BILOBA LEAF EXTRACT
<b>Description</b>	Ginkgo Biloba Leaf Extract is an extract of the leaves of Ginkgo biloba, Ginkgoaceae
INN Name	
Ph. Eur. Name	
CAS #	90045-36-6
EC #	289-896-4
Chemical/IUPAC Name	
Cosmetic Restriction	
Other Restriction(s)	
Functions	<ul style="list-style-type: none"><li>• <a href="#">SKIN CONDITIONING</a></li></ul>
SCCS opinions	
Identified INGREDIENTS or substances e.g.	

---

Source: European Commission [[https://ec.europa.eu/growth/tools-databases/cosing/index.cfm?fuseaction=search.details\\_v2&id=56174](https://ec.europa.eu/growth/tools-databases/cosing/index.cfm?fuseaction=search.details_v2&id=56174)]



# Product Information

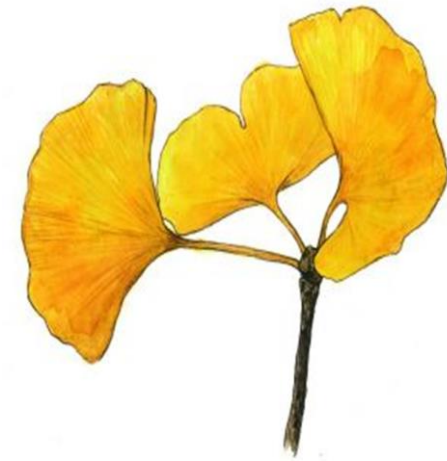
**Product Name :** Ginkjo

**INCI name :** Ginkgo Biloba Leaf Extract  
(China Compliant)


**Dosage :** 1 – 3%

**Formulation :** Add to the formulation  
when the temperature is lower than 55°C.  
Recommended to add after the cooling process.

**Storage :** Avoid direct light or UV.  
Keep it in a cool and dry area.







## The Secrets of Caledonia

The Secrets of Caledonia (TSOC) is a supplier of natural cosmetic ingredients inspired by Scottish traditional herbal medicine. Taking advantage of Scotland's biodiversity and working in collaboration with established Scottish herbalists, we aim to provide the most effective and innovative natural ingredients at the highest quality.



Tel  
+44 (0)131 629 9584



E-mail  
[marketing@tsocalledonia.co.uk](mailto:marketing@tsocalledonia.co.uk)



Address  
Unit 8F Edgefield Rd Ind Est, Loanhead,  
EH20 9TB