

Wholesoothe

Plant part: Seed

Plant name: White Poppy

Scientific name: *Papaver somniferum*

INCI name: Papaver Somniferum Seed Extract

Product Story

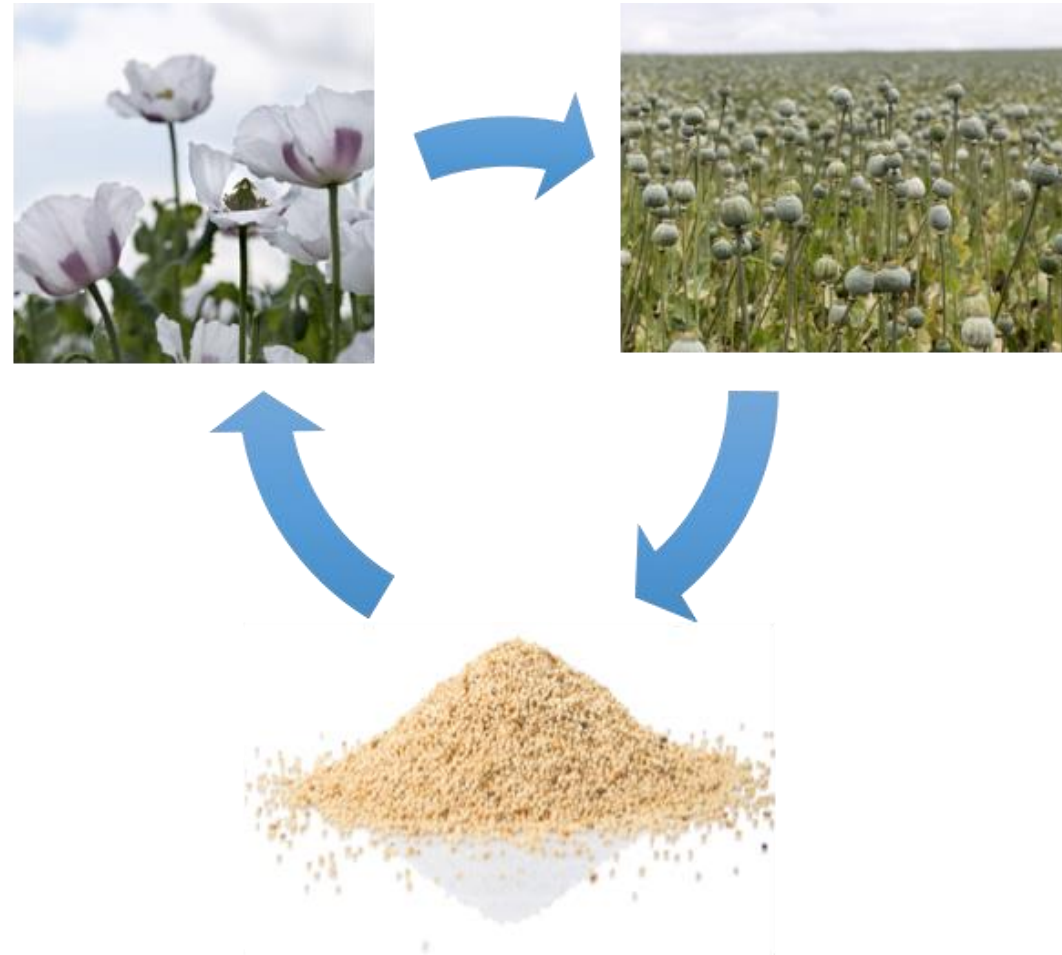
A pale variety of the species, *Papaver somniferum*, has white petals with purple staining and produces White Poppy seeds. The plant is popular as decorative flowers with origins in South-East Europe and Asia but produced worldwide now. *Papaver somniferum* has over 40 alkaloids present which are used to create opium and derivatives, such as, morphine.

Poppy seeds are a popular food item and is the source of a healthy and edible Poppy seed oil, that has many uses, due to having analgesic properties.



Harvesting Wholesoothe

- Per year roughly 80,000 tonnes of poppy seeds can be legally harvested with most of the yield from countries, such as, Czech Republic, Turkey, and Spain. Although this plant is grown over a wide range of areas in both the northern and southern hemispheres from Scandinavia to Argentina and Ethiopia.
- *Papaver somniferum* blooms in around early-mid summer with rapid growth from seed in around 120 days. These plants reach around three feet in height and petals only lasting several days before revealing an ovoid seed capsule. This capsule is left behind and can hold a maximum of one thousand seeds. Capsules are removed from the stem with seeds then extracted from within and dried.





Key Functions

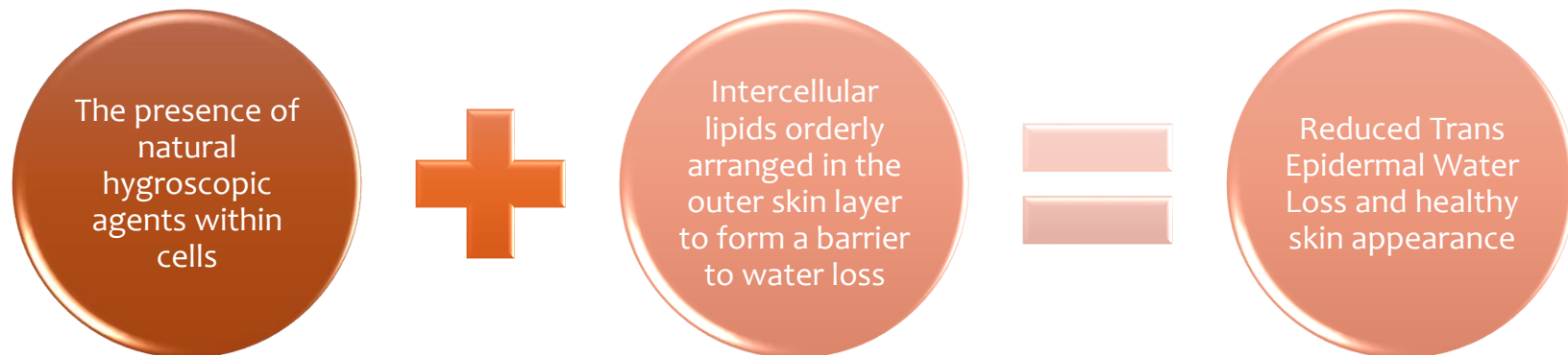
- **Antioxidant**
 - DPPH Scavenging Activity
- **Anti-Wrinkle**
 - Elastase Inhibition
- **Skin Brightening**
 - Melanin Biosynthesis Inhibition

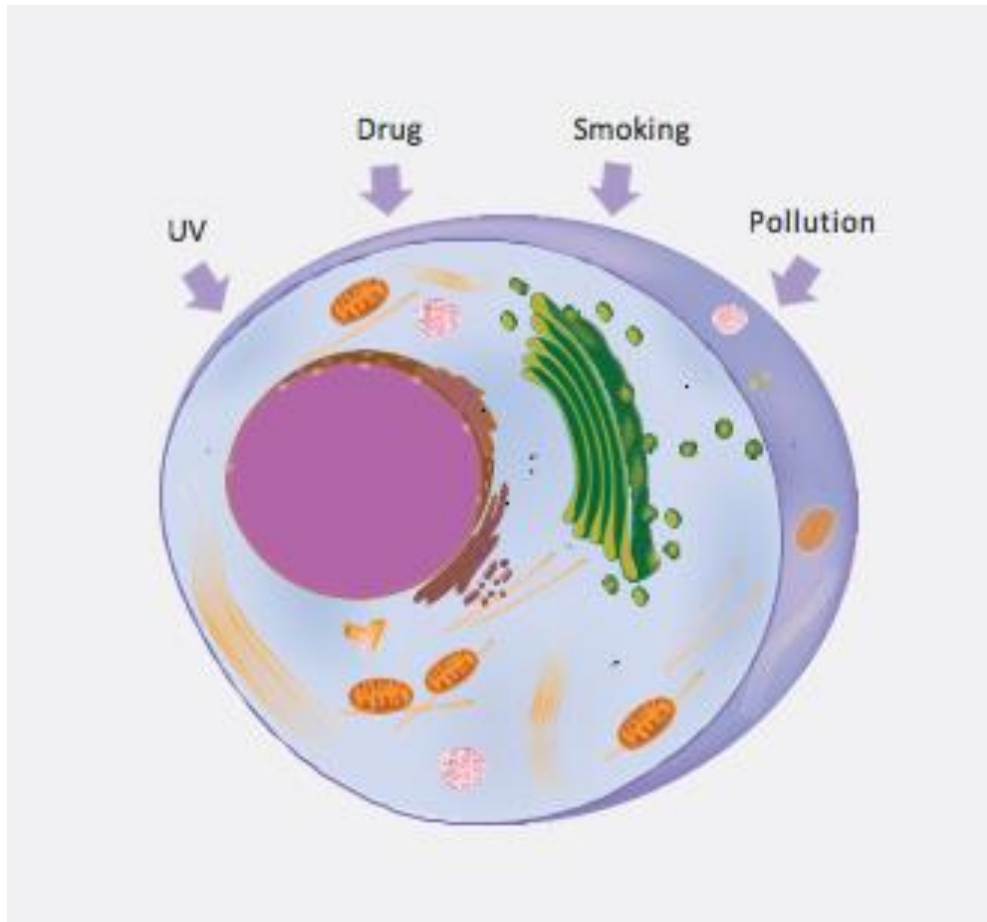
Skin Structure

Four Layers

- Stratum corneum
- Stratum lucidum
- Stratum granulosum
- Stratum spinosum

➤ Retention of water in the skin





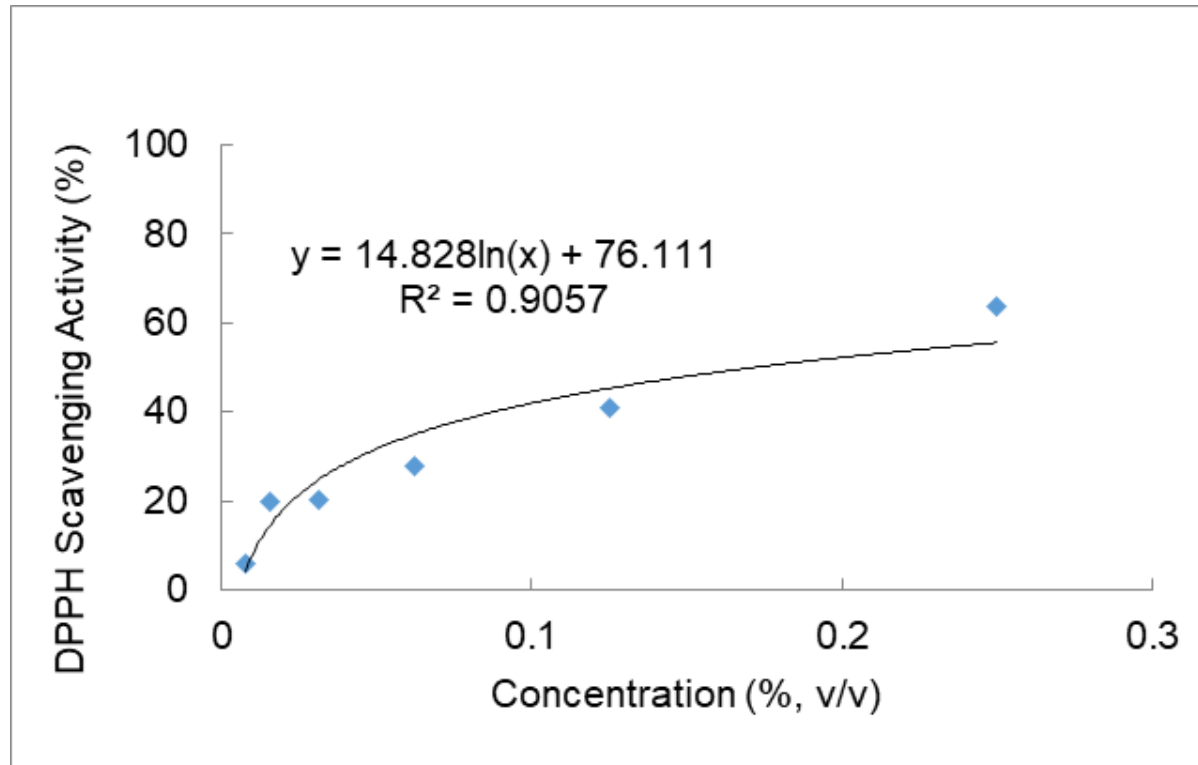
Antioxidants

Our skin is under attack from many factors in daily life, such as UV, pollution and smoking. These factors increase the Reactive Oxygen Species (ROS).

Antioxidants from Wholesoothe can inhibit the generation of ROS and in turn inhibit cellular damage.

In vitro efficacy test: Anti-Oxidation

- DPPH Scavenging Activity

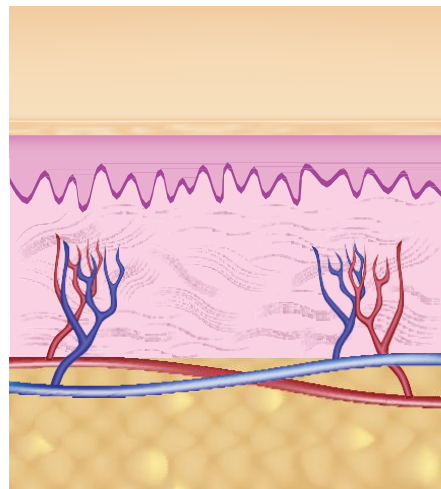


SC₅₀: 0.17%

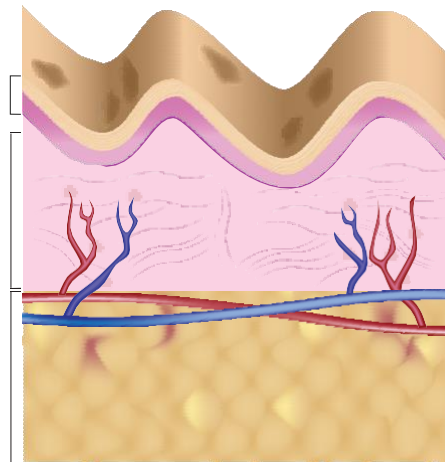
0.17% of Wholesoothe product removed 50% of the free radicals in this antioxidant test. Good antioxidant activity is critical for anti-ageing agents in skin care products.

Skin Ageing and Wrinkle Formation

Younger Skin



Older Skin



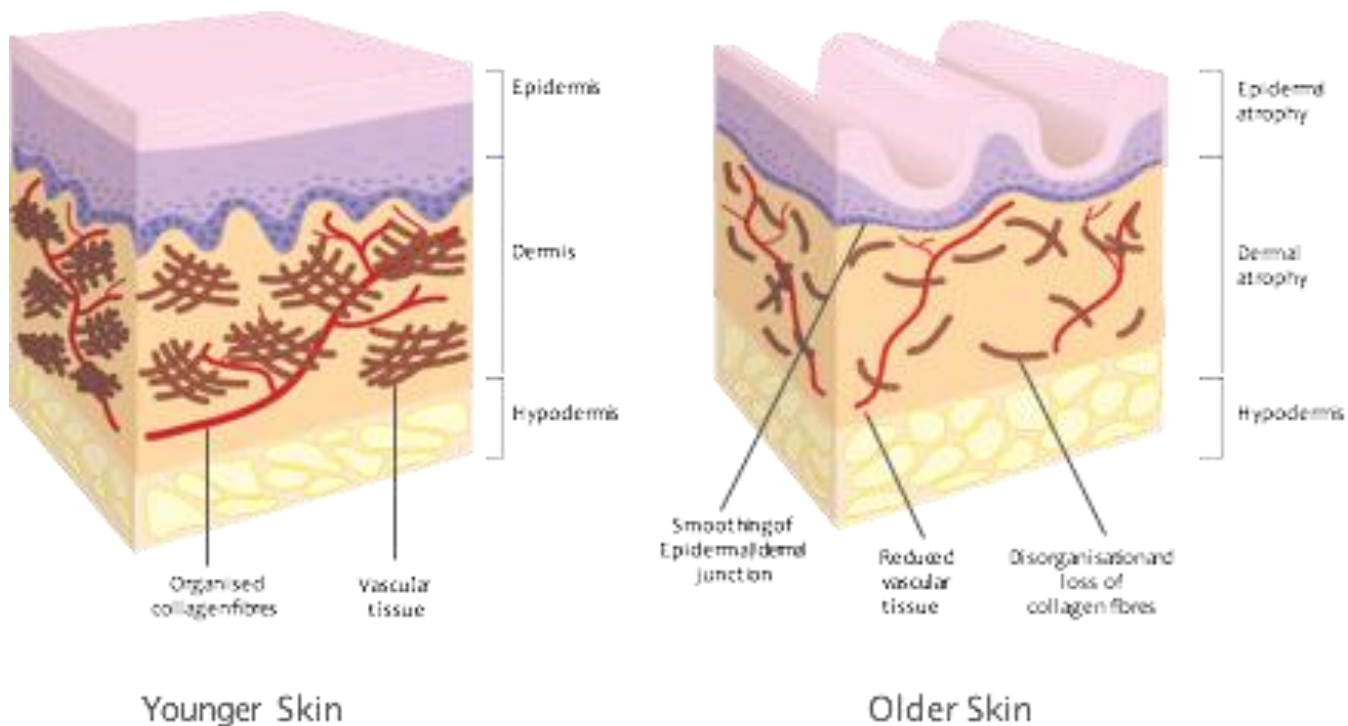
Epidermis
Dermis with collagen fibers
Hypodermis - Subcutaneous fat

⚙️ Skin ageing is noted by

- a decrease of elasticity
- formation of wrinkles and fine lines
- degradation of collagen
- thinner and weaker skin
- damaged connective tissues

Skin changes with increasing age due to both intrinsic and extrinsic factors. Intrinsic skin aging is determined by genetic factors, hormonal status and metabolic reactions such as oxidative stress. One of the most important extrinsic skin aging factors is induced by UV radiation by sun exposure, referred to as photoaging. Smoking cigarettes and environmental pollution are also essential factors in premature skin aging and wrinkle formation.

Anti-wrinkle Mechanism

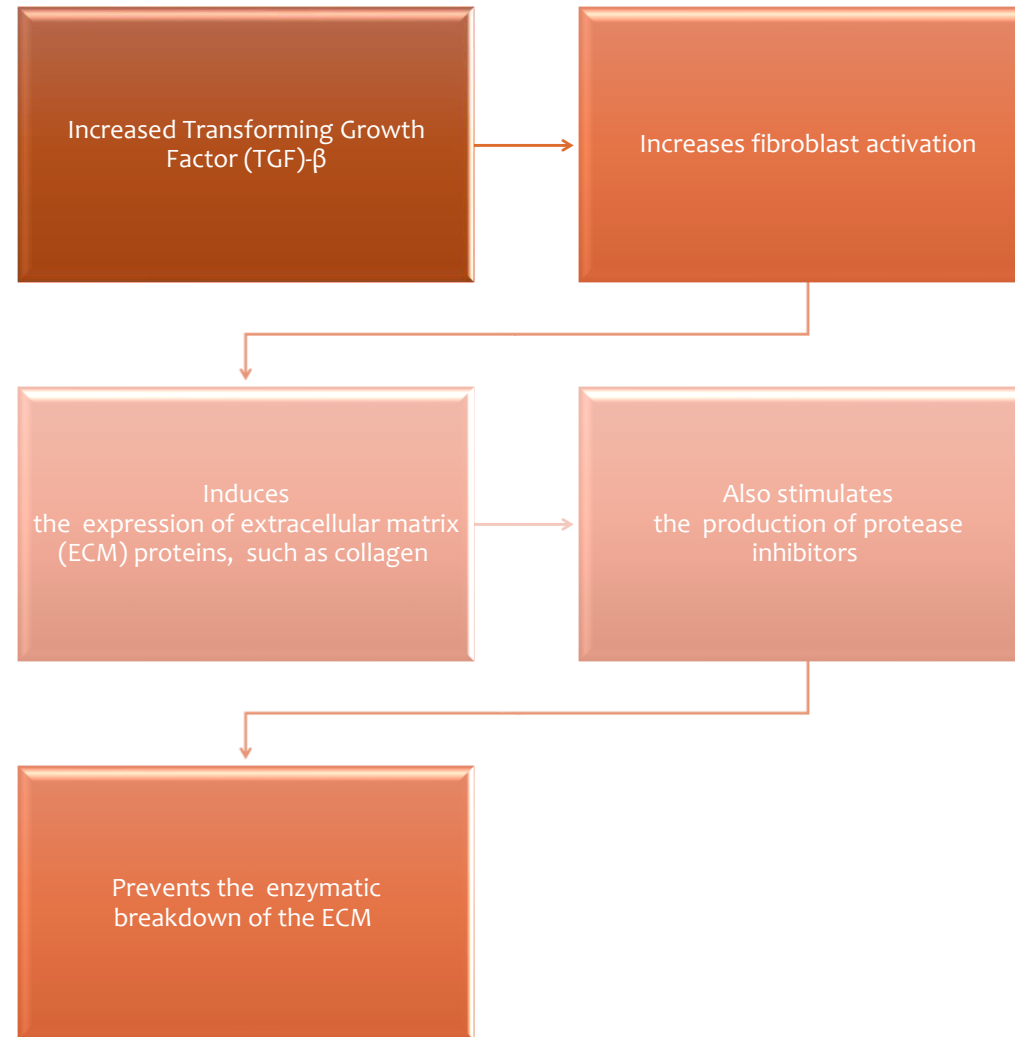


- Stimulation of collagen synthesis
- Inhibition of collagen degradation
- Inhibition of elastin degradation
- Stimulation of fibroblast proliferation



- Preventing wrinkle formation
- Increasing skin elasticity
- Wrinkle improvement

Mechanism of Collagen Synthesis



Reported Functions

Papaver Somniferum Seed Extract

- **INCI Name:** Papaver Somniferum Seed Extract
- **INCI Monograph ID:** 13159
- **VCRP Reported Name:**
Papaver Somniferum Seed Extract

VCRP Frequency of Use as of 02/2018 :
3

- **Definition:** Papaver Somniferum Seed Extract is the extract of the seeds of *Papaver somniferum*.
- **SAFETY/REGULATORY INFORMATION**
- **Information Source(s):** UNII: 60RO23IR87
- **Chemical Class(es):** [Botanical Products and Botanical Derivatives](#)
- **Reported Functions:** [Skin-Conditioning Agents - Miscellaneous](#)
- **Ingredient Source(s):** Plant
- **Technical Name(s):**
 - Opium Poppy Seed Extract
- **Trade Name Mixture(s):** [Click here to view full list of Trade Name Mixtures](#)



Product Information

Product Name : Wholesoothe

INCI name : Papaver Somniferum Seed Extract

Dosage : 1 – 3%

Formulation : Add to the formulation
when the temperature is lower than 55°C.
Recommended to add after the cooling process.

Storage : Avoid direct light or UV.
Keep it in a cool and dry area.



The Secrets of Caledonia

The Secrets of Caledonia (TSOC) is a supplier of natural cosmetic ingredients inspired by Scottish traditional herbal medicine. Taking advantage of Scotland's biodiversity and working in collaboration with established Scottish herbalists, we aim to provide the most effective and innovative natural ingredients at the highest quality.



Tel
0044 (0)131 629 9584



E-mail
marketing@tsocalledonia.co.uk



Address
8F Edgefield Rd Ind Est, Loanhead, EH20
9TB

